

LIRA CLOTHING 2022



We have added a new piece to our ever

growing Essentials line!

Introducing the new Unisex Pigment Dye Quarter Zip Fleece!

We love the way a good Pigment Dye looks and feels.

It's a perfect blend of new and old offered in

all of our current favorite colors.

Our 9oz (300 gm) 100% Cotton Fleece comes in

a Standard Fit for maximum comfort and features 1 x 1

ribbing at cuffs and waistband with a 3/4 nylon zipper.



LE1020 PIGMENT DYE QUARTER ZIP FLEECE

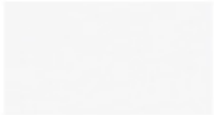
| XS - XXL | 100% COTTON | **USA:** w/s \$34 msrp \$68 **CAN:** w/s \$42.50 msrp \$85



BLACK



STONE



WHITE



ZINC



EMERALD



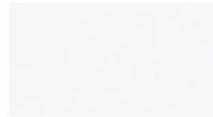
LE1019 PIGMENT DYE CREW NECK FLEECE | XS - XXL | 100% COTTON | **USA:** w/s \$27 msrp \$54 **CAN:** w/s \$35 msrp \$70



BLACK



STONE



WHITE



ZINC



EMERALD



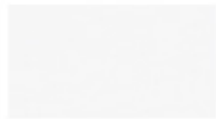
LE1016 PIGMENT DYE TEE | XS - XXL | 100% COTTON | **USA:** w/s \$17 msrp \$34 **CAN:** w/s \$20 msrp \$40



BLACK



STONE



WHITE



ZINC



CORAL



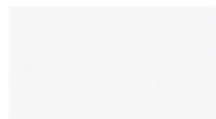
LE1017 PIGMENT DYE LS TEE | XS - XXL | 100% COTTON | **USA:** w/s \$19 msrp \$38 **CAN:** w/s \$22.50 msrp \$45



BLACK



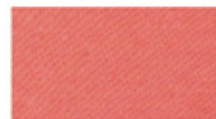
STONE



WHITE



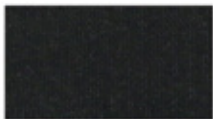
ZINC



CORAL



LE1014 PIGMENT DYE FLEECE JOGGER | XS - XXL | 80% COTTON 20% POLY | **USA:** w/s \$24 msrp \$48 **CAN:** w/s \$30 msrp \$60



BLACK



GREY



STONE



ZINC



EMERALD



LE1015 PIGMENT DYE FLEECE JOGGER SHORT | XS - XXL | 80% COTTON 20% POLY | **USA:** w/s \$17.50 msrp \$35 **CAN:** w/s \$22.50 msrp \$45



BLACK



GREY



STONE



ZINC



EMERALD



😊 AVAILABLE IN YOUTH S - XL



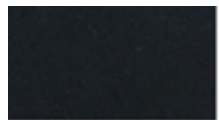
LC6754 WEEKEND JOGGER 2.0
LY0001 WEEKEND JOGGER 2.0

28 - 38
S - XL

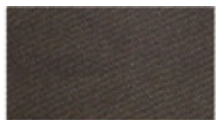
98% COTTON 2% SPANDEX
98% COTTON 2% SPANDEX

USA: w/s \$27 msrp \$54
USA: w/s \$22 msrp \$44

CAN: w/s \$35 msrp \$70
CAN: w/s \$27.50 msrp \$55



BLACK



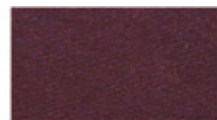
BROWN



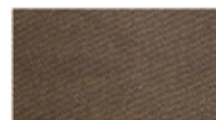
EMERALD



OLIVE



BURGUNDY



KHAKI



CHARCOAL



CAMO

😊 AVAILABLE IN YOUTH S - XL



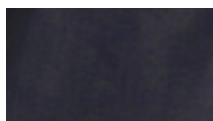
LC6843 WEEKDAY JOGGER SHORT 2.0 | 28 -38 | 98% COTTON 2% SPANDEX | **USA:** w/s \$22 msrp \$44 **CAN:** w/s \$27.50 msrp \$55
LY0003 WEEKDAY JOGGER SHORT 2.0 | S -XL | 98% COTTON 2% SPANDEX | **USA:** w/s \$20 msrp \$40 **CAN:** w/s \$25 msrp \$50



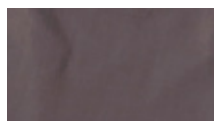
BLACK SLATE EMERALD SAGE BURGUNDY KHAKI CHARCOAL CAMO OLIVE



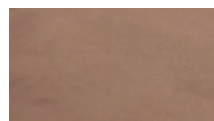
LC7221 FULL COURT NYLON JOGGER | XS - XXL | 100% NYLON | **USA:** w/s \$24 msrp \$48 **CAN:** w/s \$30 msrp \$60



BLACK



CHARCOAL



KHAKI



SLATE



BURGUNDY



SAGE



EMERALD



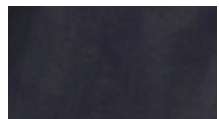
STONE



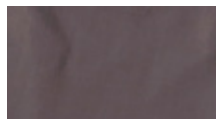
LILAC



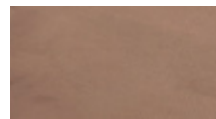
LC7212 COURT NYLON SHORT | XS - XXL | 100% NYLON | USA: w/s \$20 msrp \$40 CAN: w/s \$25 msrp \$50



BLACK



CHARCOAL



KHAKI



SLATE



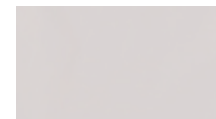
BURGUNDY



SAGE



EMERALD



STONE



LILAC



LC6833 SHOOTY WOVEN | XS - XXL | 100% COTTON | USA: w/s \$24 msrp \$48 CAN: w/s \$30 msrp \$60



BLACK



GREY



EMERALD



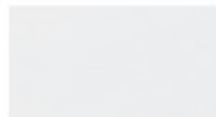
RED



MUSTARD



PINK



WHITE



ZINC



LC6835 DOUGLAS LS WOVEN | XS - XXL | 100% COTTON | USA: w/s \$27 msrp \$54 CAN: w/s \$350 msrp \$70



BLACK



GREY



EMERALD



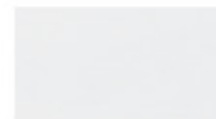
RED



MUSTARD



PINK



WHITE



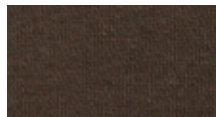
ZINC



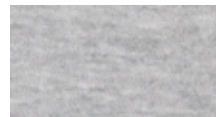
LE1008 PULLOVER HOOD | XS - XXL | 100% COTTON | **USA:** w/s \$26 msrp \$52 **CAN:** w/s \$32.50 msrp \$75



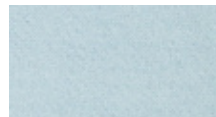
BLACK



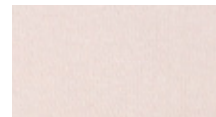
BROWN



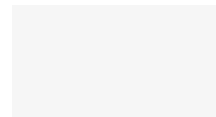
HEATHER GREY



LT. BLUE



PINK



WHITE



LE1009 PULLOVER HOOD VINTAGE WASH | XS - XXL | 100% COTTON | **USA:** w/s \$29 msrp \$58 **CAN:** w/s \$37.50 msrp \$75



BLACK



NAVY



OLIVE



BURGUNDY



ZINC



CAMEL



MUSTARD



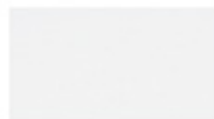
LE1000 POCKET TEE | XS - XXL | 100% COTTON | **USA:** w/s \$16 msrp \$32 **CAN:** w/s \$19 msrp \$38



BLACK



HEATHER GREY



WHITE



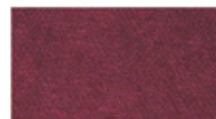
LE1001 POCKET TEE MINERAL WASH | XS - XXL | 100% COTTON | **USA:** w/s \$17 msrp \$34 **CAN:** w/s \$20 msrp \$40



BLACK



NAVY



BURGUNDY

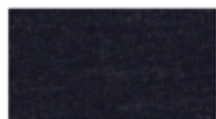




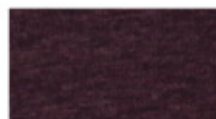
LE1003 POCKET TEE TRI-BLEND | XS - XXL | 50% COTTON 25% RAYON 25% POLY | **USA:** w/s \$16 msrp \$32 **CAN:** w/s \$19 msrp \$38



BLACK



HEATHER NAVY



HEATHER PLUM



HEATHER OLIVE



HEATHER GREY



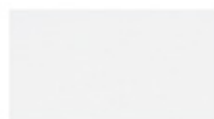
LE1004 HENLEY | XS - XXL | 100% COTTON | **USA:** w/s \$18 msrp \$36 **CAN:** w/s \$21 msrp \$42



BLACK



HEATHER GREY



WHITE



LE1005 HENLEY MINERAL WASH | XS - XXL | 100% COTTON | **USA:** w/s \$19 msrp \$38 **CAN:** w/s \$22.50 msrp \$45



BLACK



NAVY



BURGUNDY





LE1002 VINTAGE WASH TEE | XS - XXL | 100% COTTON | **USA:** w/s \$15 msrp \$30 **CAN:** w/s \$17 msrp \$34



BLACK



NAVY



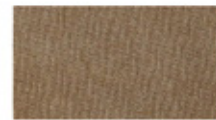
OLIVE



BURGUNDY



ZINC



CAMEL



MUSTARD



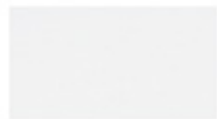
LE1006 POCKET TANK | XS - XXL | 100% COTTON | **USA:** w/s \$16 msrp \$32 **CAN:** w/s \$19 msrp \$38



BLACK



HEATHER GREY



WHITE



LE1007 POCKET TANK MINERAL WASH | XS - XXL | 100% COTTON | **USA:** w/s \$17 msrp \$34 **CAN:** w/s \$20 msrp \$40



BLACK



NAVY



BURGUNDY





LC7112 CARSON BEANIE | OSFM | 100% ACRYLIC | **USA:** w/s \$6 msrp \$12 **CAN:** w/s \$8 msrp \$16



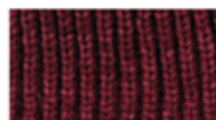
BLACK



EMERALD



OLIVE



BURGUNDY



RED



ROYAL BLUE



NEON GREEN



NEON ORNAGE



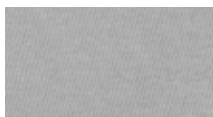
VINTAGE WHITE



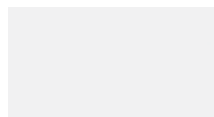
LC1020 PARRALEL HAT | OSFM | 100% COTTON | **USA:** w/s \$12 msrp \$24 **CAN:** w/s \$17.50 msrp \$35



BLACK



STONE



WHITE



OLIVE

SALES CONTACTS

LIRA CLOTHING
3421 VIA OPORTO #201
NEWPORT BEACH, CA 92663

SEAN HARRIS
NATIONAL SALES MGR
C. 949.929.8270
sean@liraclimbing.com

INTERNATIONAL

LIRA CANADA INC.
1443 RUE BEGIN,
SAINT-LAURENT QC H4R 1V8
CANADA (LIRA)
O. 877-507-5472

MARC-A. SAUCIER
CANADIAN SALES MGR
C. 877.507.5472
marc@liraclimbing.com

JON H. GENIER
QUEBEC & MARITIME
C. 450.542.0396
jonh@agencejg.com

